

FOR SALE

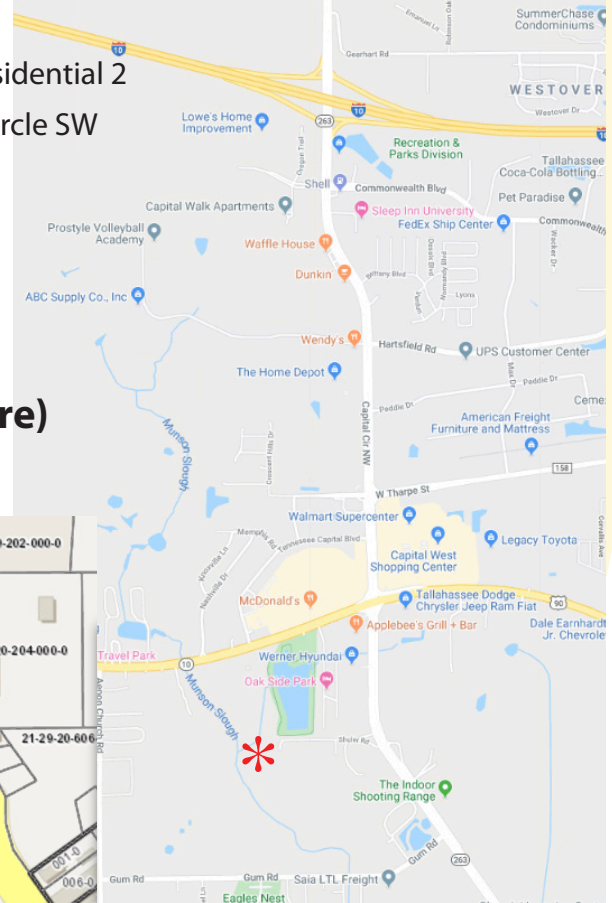
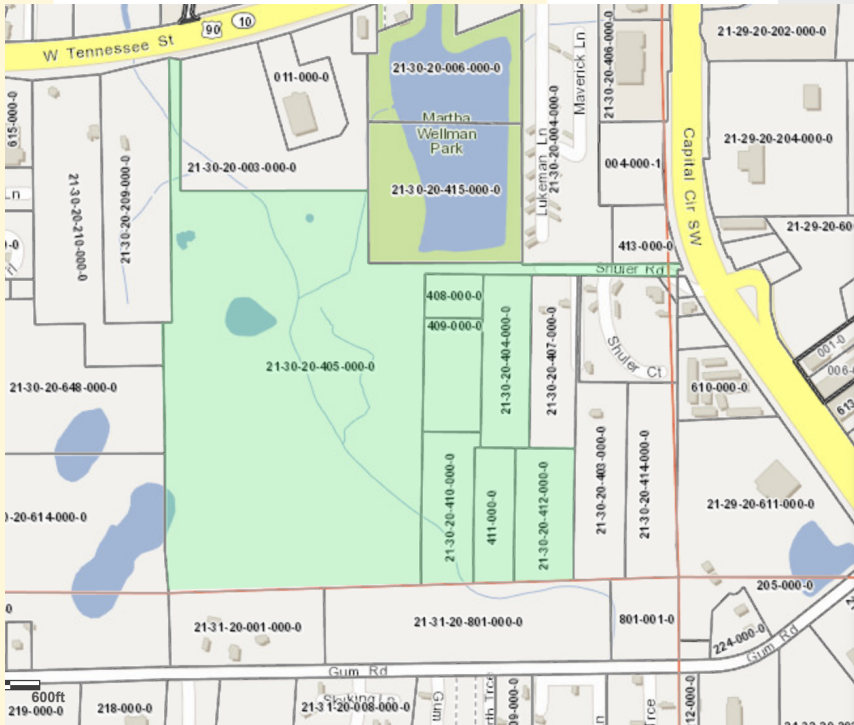
THE **WILLIAMS** GROUP
commercial real estate services

+/-84.98 Acres Vacant Land

West Tennessee Street and Capital Circle SW, Tallahassee, FL

- >> Zoning: M-1 - light industrial, CP - Commercial Parkway and R-3 - Residential 3
- >> Future Land Use: SUB - Suburban and UR-2 - Urban Residential 2
- >> Access from both West Tennessee Street and Capital Circle SW
- >> Convenient westside location with easy access to I-10, FSU, TCC, FAMU and downtown Tallahassee
- >> Parcels included: 2130204050000, 2130204080000, 2130204090000, 2130204040000, 2130204100000, 2130204110000, and 2130204120000

>> **Asking Price: \$4,249,000 (\$50,000 per acre)**



For more information contact :
Johanna W Money

PO Box 2068 Tallahassee, FL 32316 // p 850.545.1674 // f 850.224.1790 // johanna@williamsgroupcre.com

All information contained in this document is deemed reliable but not guaranteed. All properties are subject to prior sale, change or withdrawal notice. The Williams Group believes all information to be correct but assumes no legal responsibility for accuracy.

850.545.1674
www.WilliamsGroupCRE.com

FOR SALE

THE **WILLIAMS** GROUP
commercial real estate services

Traffic Count



For more information contact :
Johanna W Money

PO Box 2068 Tallahassee, FL 32316 // p 850.545.1674 // f 850.224.1790 // johanna@williamsgroupcre.com

All information contained in this document is deemed reliable but not guaranteed. All properties are subject to prior sale, change or withdrawal notice. The Williams Group believes all information to be correct but assumes no legal responsibility for accuracy.

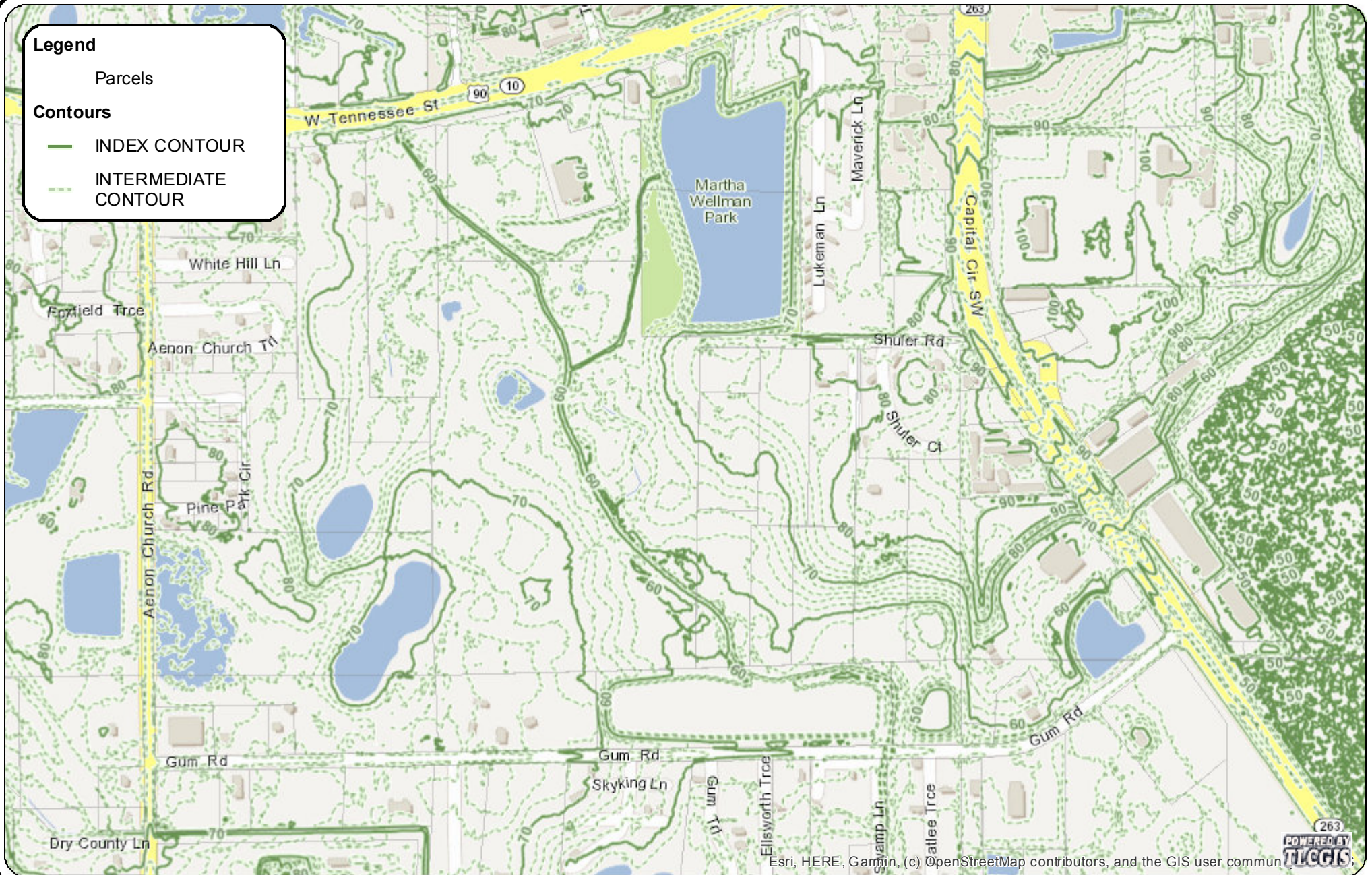
850.545.1674
www.WilliamsGroupCRE.com

Legend

Parcels

Contours

- INDEX CONTOUR
- INTERMEDIATE CONTOUR



Esri, HERE, Garmin, (c) OpenStreetMap contributors, and the GIS user community



Contour Map

DISCLAIMER

This product has been compiled from the most accurate source data from Leon County, the City of Tallahassee, and the Leon County Property Appraiser's Office. However, this product is for reference purposes only and is not to be construed as a legal document or survey instrument. Any reliance on the information contained herein is at the user's own risk. Leon County, the City of Tallahassee, and the Leon County Property Appraiser's Office assume no responsibility for any use of the information contained herein or any loss resulting therefrom.



Scale:

Not To Scale:

Date Drawn:

January 22, 2020

Tallahassee/Leon County GIS
 Management Information Services
 Leon County Courthouse
 301 S. Monroe St, P3 Level
 Tallahassee, FL 32301
 850/606-5504
<http://www.tlccgis.org>

